

Pilbara Model of Care: Health System

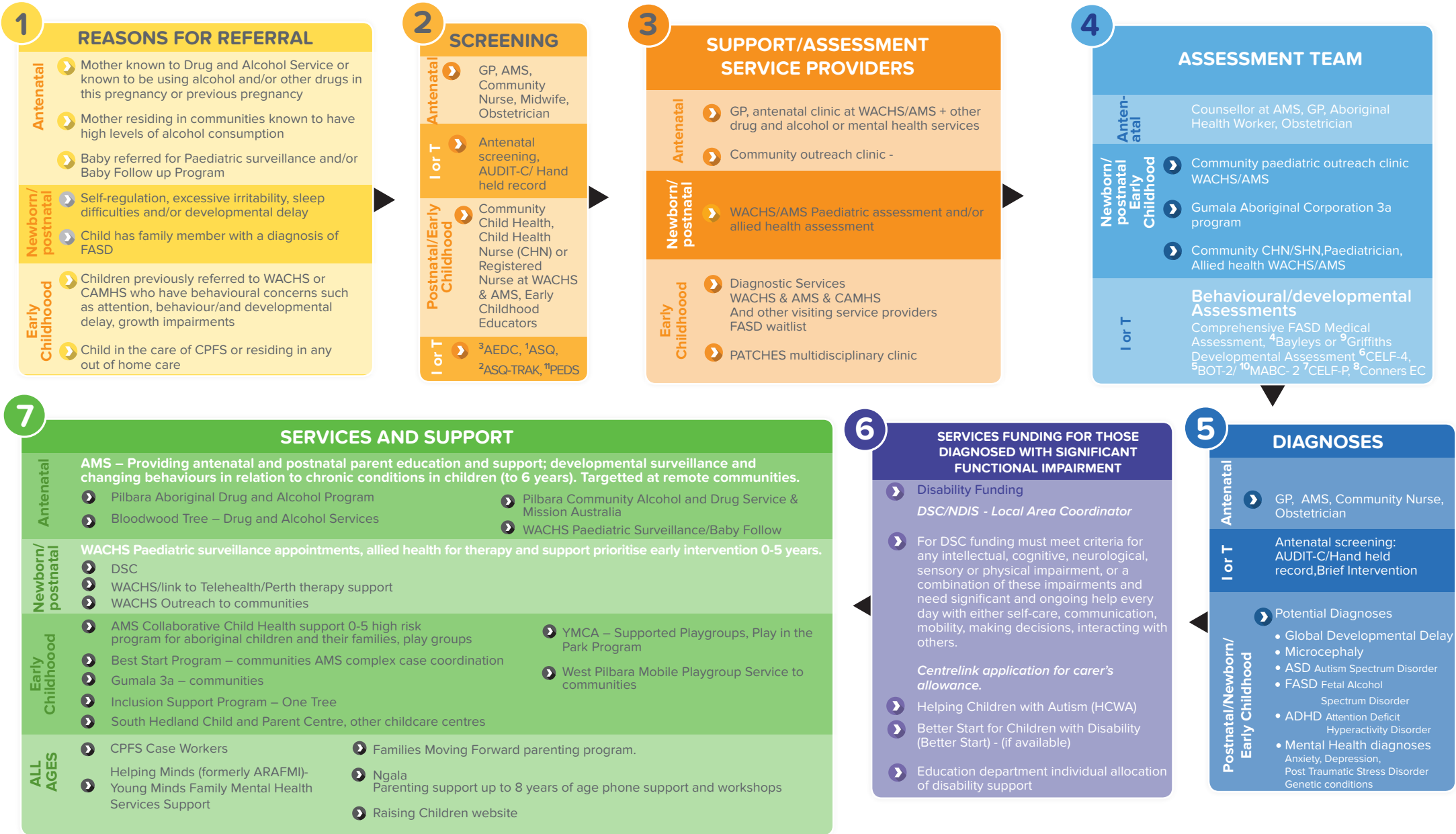
Dudley, A; Fitzpatrick, J; Walker, R

November 2016



A mother and child's Integrated Journey:
Fetal Alcohol Spectrum Disorder (FASD)

0 - 4 years



I or T = Instruments or Tools

Assessments: ¹Agnes and Stages Questionnaire (ASQ), ²Agnes and Stages Questionnaire for Aboriginal Children (ASQ-TRAK), ³Australian Early Development Consensus (AEDC), ⁴Bayleys Scales of Infant and Toddler Development, ⁵Bruininks-Oseretsky Test of Motor Proficiency-2, ⁶Comprehensive Evaluation of Language Fundamentals 4 - English Screener (CELF-4), ⁷Comprehensive Evaluation of Language Fundamentals Preschool (CELF-P), ⁸Conners Early Childhood, ⁹Griffiths Mental Development Scales, ¹⁰Movement Assessment Battery for Children- 2, National Disability Insurance Scheme (NDIS), ¹¹Parents Evaluation of Developmental Status (PEDS), ¹¹Wide-range Assessment of Memory & Learning (2nd edition)

Organisations: Aboriginal Medical Service (AMS), Child and Adolescent Mental Health Service (CAMHS), Department for Child Protection & Family Support (CPFS), Disability Services Commission (DSC)

Note: No specific screening tools are available for FASD.

FIGURE 2

Pilbara Model of Care: Health System

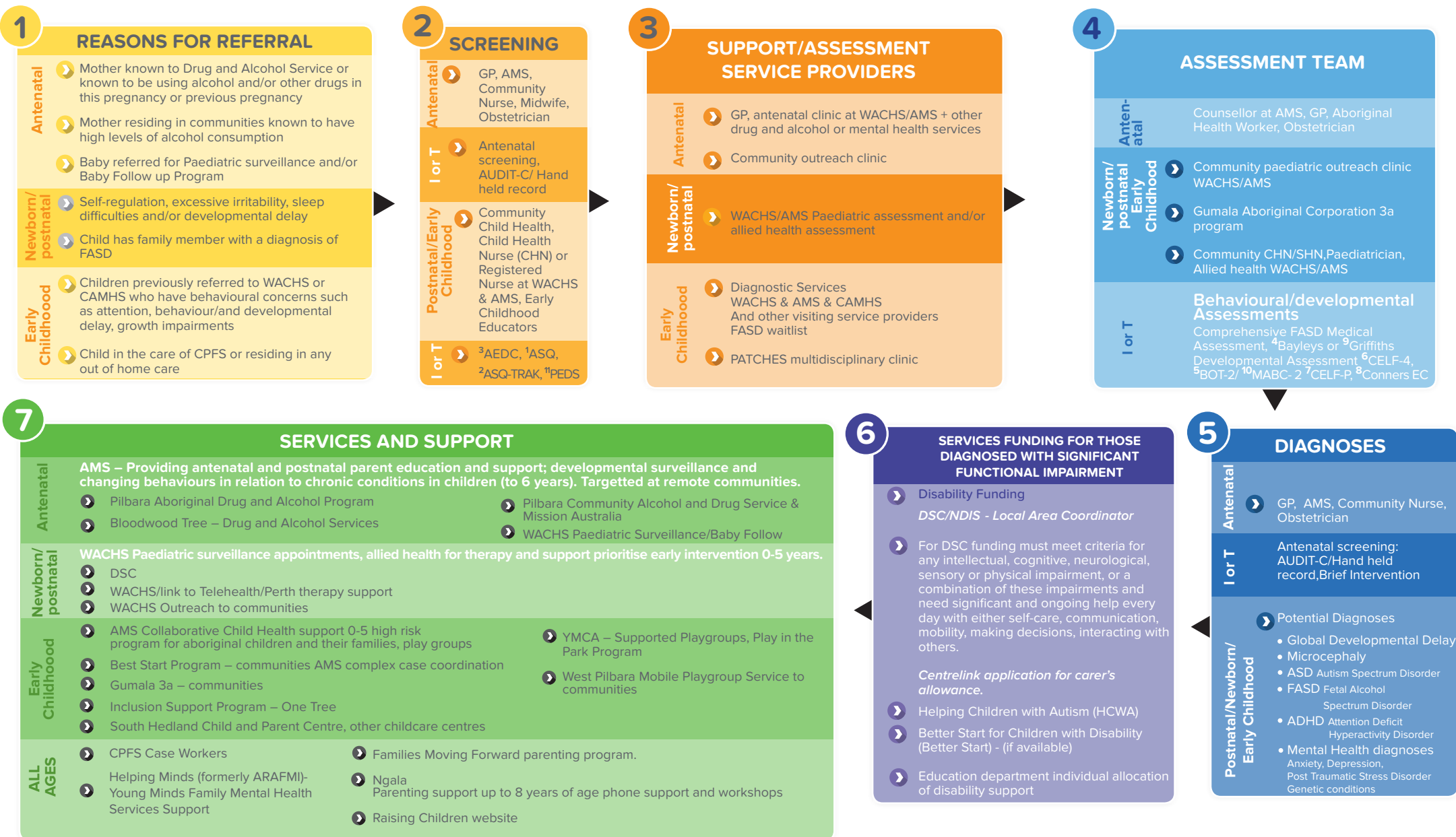
Dudley, A; Fitzpatrick, J; Walker, R

November 2016



A mother and child's Integrated Journey:
Fetal Alcohol Spectrum Disorder (FASD)

0 - 4 years



I or T = Instruments or Tools

Assessments: ¹Agnes and Stages Questionnaire (ASQ), ²Agnes and Stages Questionnaire for Aboriginal Children (ASQ-TRAK), ³Australian Early Development Consensus (AEDC), ⁴Bayleys Scales of Infant and Toddler Development, ⁵Bruininks-Oseretsky Test of Motor Proficiency-2, ⁶Comprehensive Evaluation of Language Fundamentals 4 - English Screener (CELF-4), ⁷Comprehensive Evaluation of Language Fundamentals Preschool (CELF-P), ⁸Conners Early Childhood, ⁹Griffiths Mental Development Scales, ¹⁰Movement Assessment Battery for Children- 2, National Disability Insurance Scheme (NDIS), ¹¹Parents Evaluation of Developmental Status (PEDS), ¹¹Wide-range Assessment of Memory & Learning (2nd edition)

Organisations: Aboriginal Medical Service (AMS), Child and Adolescent Mental Health Service (CAMHS), Department for Child Protection & Family Support (CPFS), Disability Services Commission (DSC)

Note: No specific screening tools are available for FASD.

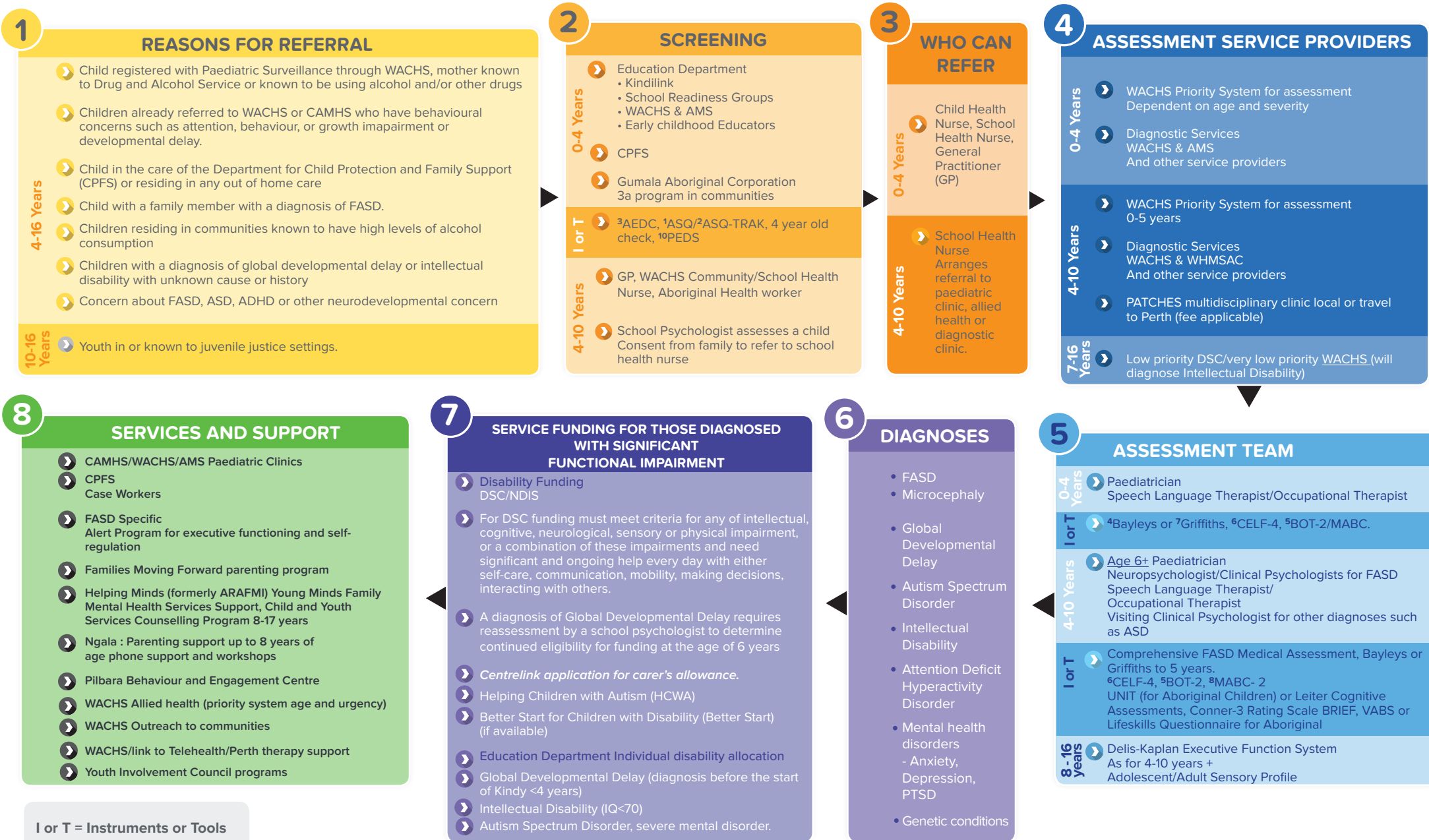
Pilbara Model of Care: Education System

Dudley, A; Fitzpatrick, J; Walker, R

November 2016



A child's Integrated Journey:
Fetal Alcohol Spectrum Disorder (FASD)
4 years and over



Assessments: ¹Agnes and Stages Questionnaire (ASQ), ²Agnes and Stages Questionnaire for Aboriginal Children (ASQ-TRAK), ³Australian Early Development Consensus (AEDC), ⁴Bayleys Scales of Infant and Toddler Development, ⁵Behaviour Rating Inventory of Executive Function (BRIEF), ⁶Bruininks-Oseretsky Test of Motor Proficiency-2, ⁷Comprehensive Evaluation of Language Fundamentals 4 - English Screener (CELF-4), ⁸Griffiths Mental Development Scales, ⁹Movement Assessment Battery for Children- 2, ¹⁰Parent Evaluation of Developmental Status (PEDS), ¹¹Vineland Adaptive Behaviour Scales (VABS)

Organisations: Aboriginal Medical Service (AMS), Disability Services Commission (DSC), Western Australian Country Health Service (WACHS)

Note: No specific screening tools are available for FASD.

FIGURE 3

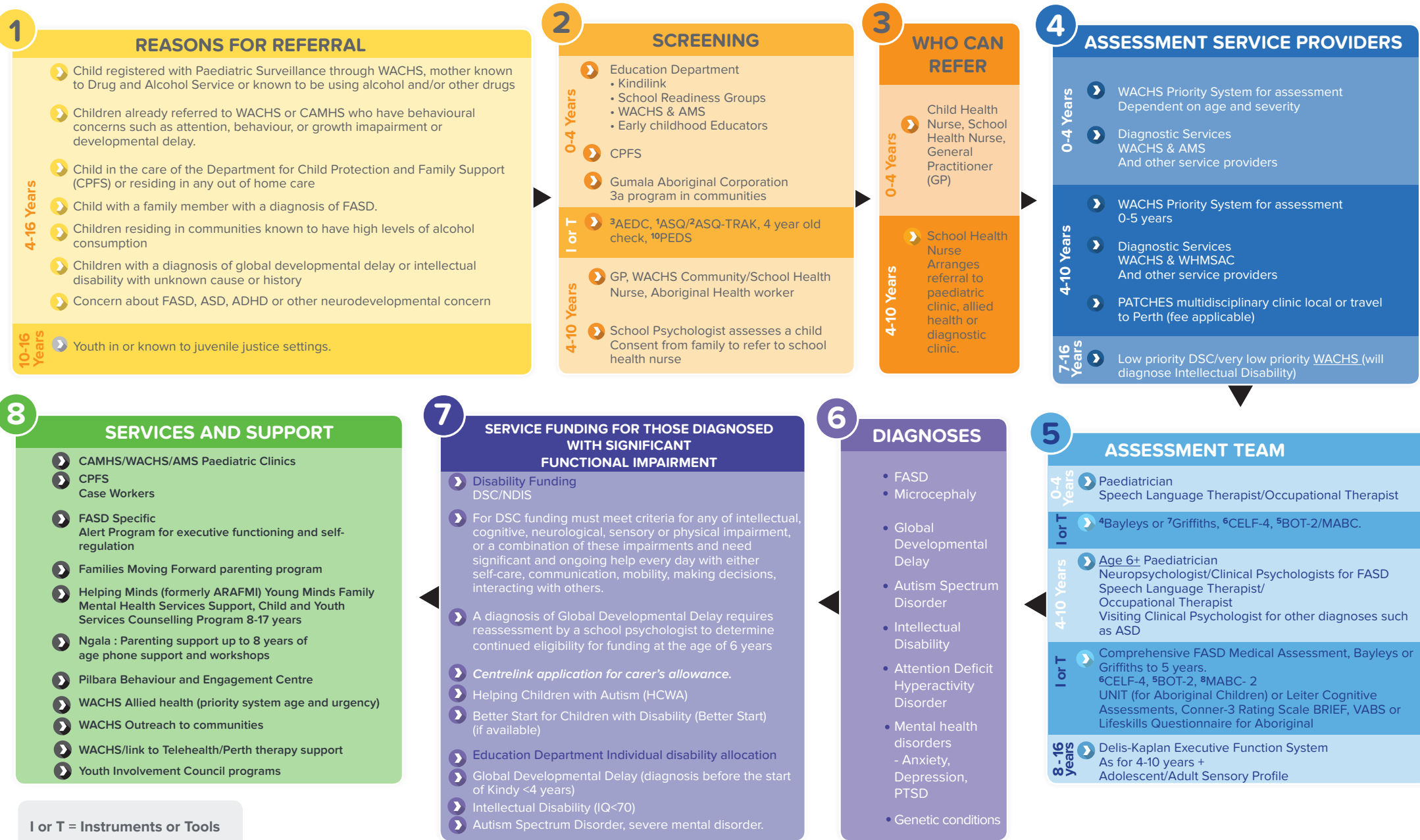
Pilbara Model of Care: Education System

Dudley, A; Fitzpatrick, J; Walker, R

November 2016



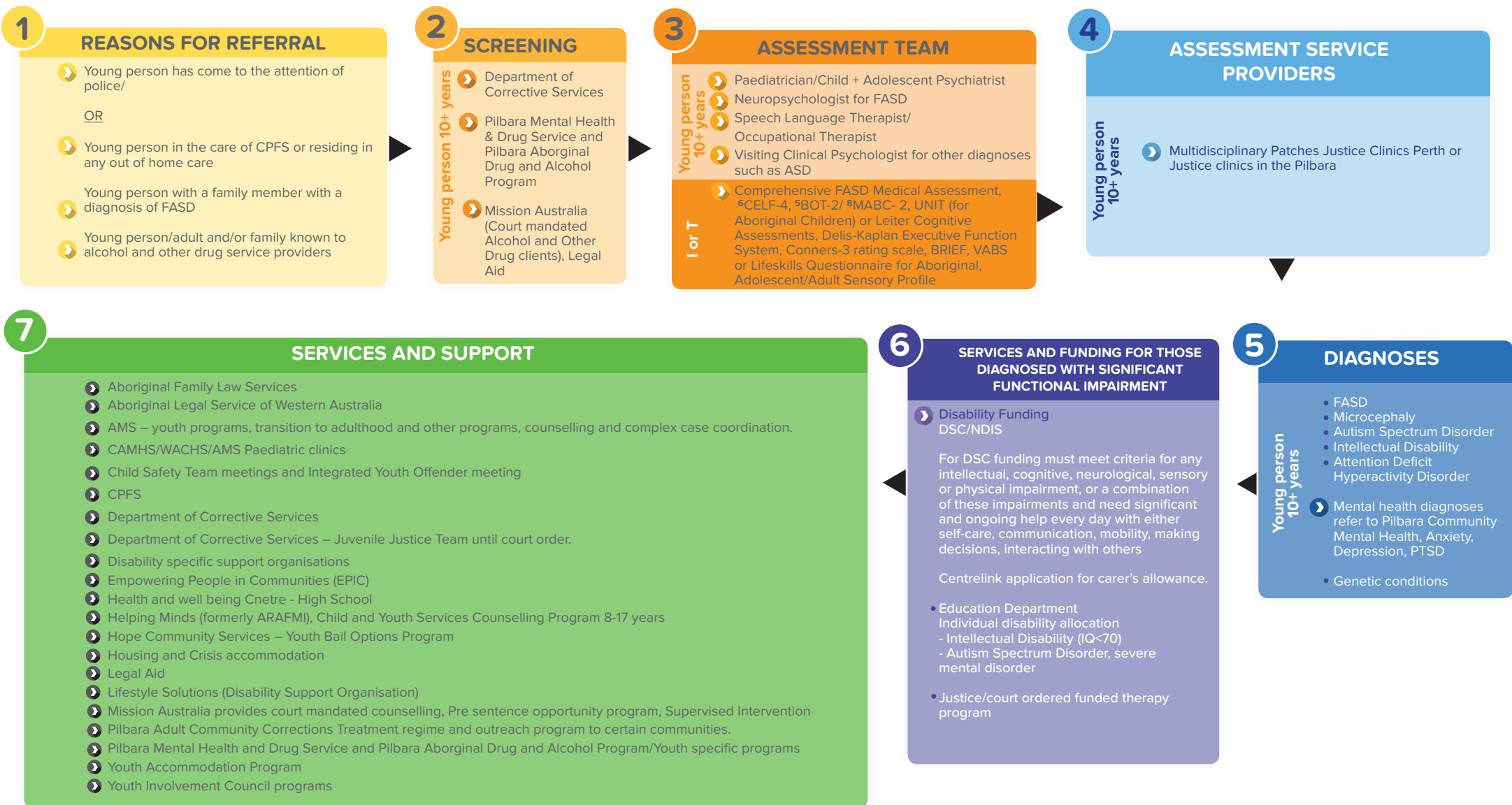
A child's Integrated Journey:
Fetal Alcohol Spectrum Disorder (FASD)
4 years and over



Assessments: ¹Agnes and Stages Questionnaire (ASQ), ²Agnes and Stages Questionnaire for Aboriginal Children (ASQ-TRAK), ³Australian Early Development Consensus (AEDC), ⁴Bayleys Scales of Infant and Toddler Development, ⁵Behaviour Rating Inventory of Executive Function (BRIEF), ⁶Bruininks-Oseretsky Test of Motor Proficiency-2, ⁷Comprehensive Evaluation of Language Fundamentals 4 - English Screener (CELF-4), ⁸Griffiths Mental Development Scales, ⁹Movement Assessment Battery for Children- 2, ¹⁰Parent Evaluation of Developmental Status (PEDS), ¹¹Vineland Adaptive Behaviour Scales (VABS)

Organisations: Aboriginal Medical Service (AMS), Disability Services Commission (DSC), Western Australian Country Health Service (WACHS)

Note: No specific screening tools are available for FASD.



I or T = Instruments or Tools

Assessments: ¹Agnes and Stages Questionnaire (ASQ), ²Agnes and Stages Questionnaire for Aboriginal Children (ASQ-TRAK), ³Australian Early Development Consensus (AEDC), ⁴Bayleys Scales of Infant and Toddler Development, ⁵Behaviour Rating Inventory of Executive Function (BRIEF) ⁵Bruininks-Oseretsky Test of Motor Proficiency-2, ⁷Comprehensive Evaluation of Language Fundamentals 4 - English Screener (CELF-4), ⁸Griffiths Mental Development Scales, ⁹Movement Assessment Battery for Children- 2, ¹⁰Vineland Adaptive Behaviour Scales (VABS)

Organisations: Aboriginal Medical Service (AMS), Child and Adolescent Mental Health Service (CAMHS), National Disability Insurance Scheme (NDIS), Disability Services Commission (DSC), National Disability Insurance Scheme (NDIS), Western Australian Country Health Service (WACHS)

Note: No specific screening tools are available for FASD.

FIGURE 5

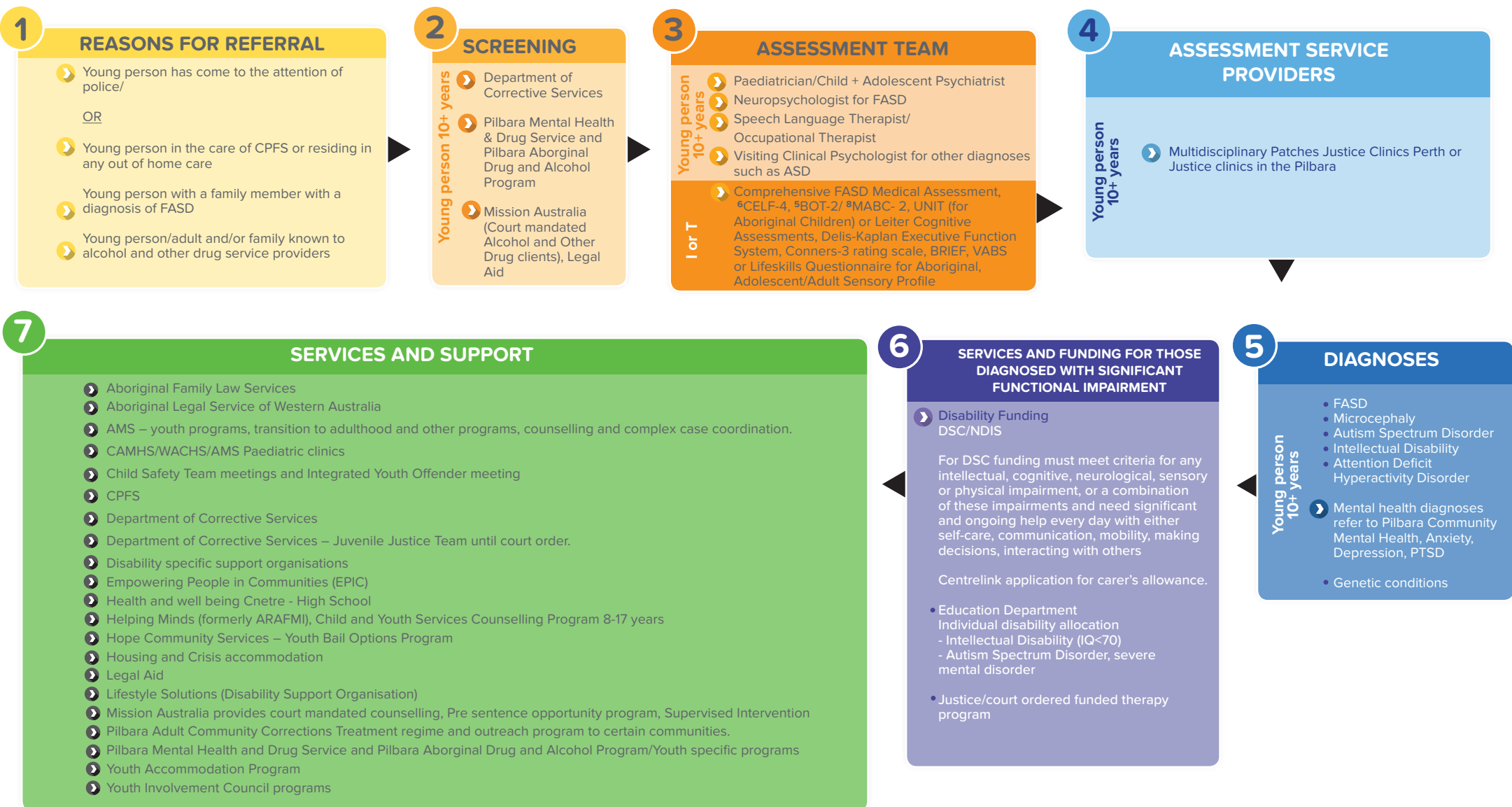
Pilbara Model of Care: Justice System

Dudley, A; Fitzpatrick, J; Walker, R

November 2016



A young person's Integrated Journey:
Fetal Alcohol Spectrum Disorder (FASD)
10+ years



I or T = Instruments or Tools

Assessments: ¹Agnes and Stages Questionnaire (ASQ), ²Agnes and Stages Questionnaire for Aboriginal Children (ASQ-TRAK), ³Australian Early Development Consensus (AEDC), ⁴Bayleys Scales of Infant and Toddler Development, ⁵Behaviour Rating Inventory of Executive Function (BRIEF) ⁵Bruininks-Oseretsky Test of Motor Proficiency-2, ⁷Comprehensive Evaluation of Language Fundamentals 4 - English Screener (CELF-4), ⁸Griffiths Mental Development Scales, ⁹Movement Assessment Battery for Children- 2, ¹⁰Vineland Adaptive Behaviour Scales (VABS)

Organisations: Aboriginal Medical Service (AMS), Child and Adolescent Mental Health Service (CAMHS), National Disability Insurance Scheme (NDIS), Disability Services Commission (DSC), National Disability Insurance Scheme (NDIS), Western Australian Country Health Service (WACHS)

Note: No specific screening tools are available for FASD.